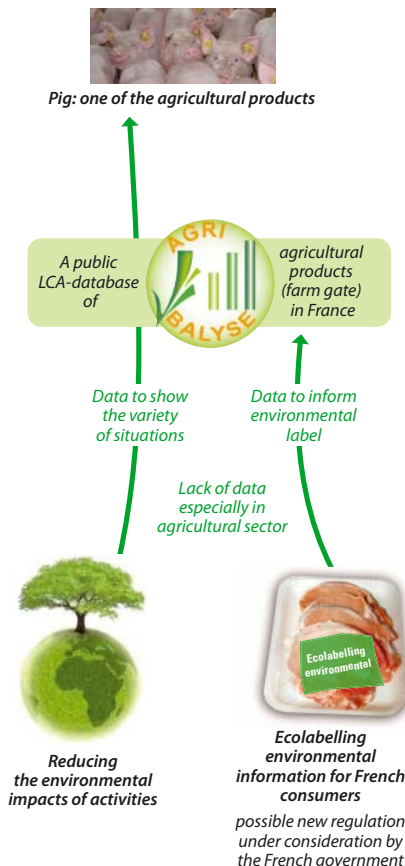


Espagnol S.(1)\*, Salou T.2, van der Werf H. (2)

(1) IFIP French institute for pig and pork industry, France ; (2) INRA UMR 1069 Sol Agro et hydrosystème Spatialisation, France

## 1. Context

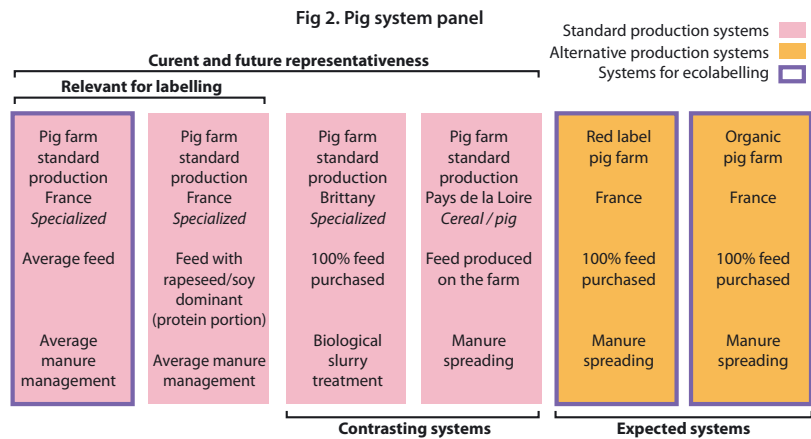
Fig 1. Context of LCA production for pig



## 2. Question : Which pig systems should be prioritised to produce the first values for a french LCI database?

- For ecolabelling
  - What is the current tracability between farm systems and final products ?
  - What would be relevant for tracability ?
- For environmental assessment : Which systems are contrasted considering environmental impacts ?

## 3. Presentation of the pig systems panel



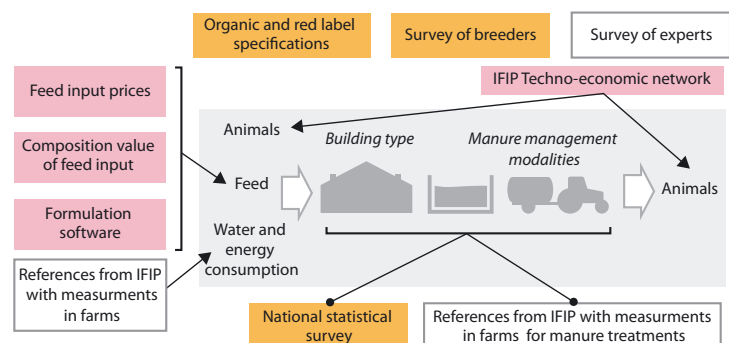
Some criteria have defined the choice of systems:

- Representativeness: systems in standard production are representative and might be in the future
- Relevance for labelling : It seems useful to allow consumers to distinguish between products on environmental impacts e.g. the farmers choice for the composition of feed
- Contrasted systems help to study the variability of environmental assessments between farms
- Expected systems should be considered and analysed with the same methodology. Moreover consumers can already identify them.

## 4. Characterisation of the pig systems

- Many sources mobilised
- Very heterogeneous availability of information (complete for standard production systems and many data gaps for alternative systems)
- Relative homogeneous systems in standard production and a huge variability in alternative ones
- Some data is very dependent on the year (e.g. composition of feed) or change over time: 5 years were considered (2005-2009).

Fig 3. Data sources to characterize systems



## Conclusion

- The pig system panel is adapted to the two purposes of the national LCA database (ecolabelling and environmental assesement)
- Results of ecolabelling LCA will give first references which could be used in the current context of tracability. If the objectives of ecolabelling is to improve farms, then it will be necessary to produce more references and to be able to trace other criteria
- Alternative systems are insufficiently documented to be considered representative of the existing diversity. If these references are used, especially in eco labelling, this must be taken into consideration.